

**Series
8819**



Submersible Push – Pull Connector

**IP 68
Watertight up to 300m**



Introduction

The 8819 connector is a family of push-pull waterproof connectors, suitable for multiple uses requiring total sealing to allow safe use in wet surroundings, marine environments and in cases of continuous spray or immersion.

The combination of rigid plastic materials and flexible elastomer (waterproof sleeve) results in an underwater connector offering the best quality to price ratio on this market. Our 8819 connectors are easily assembled as no specific tool is required. The 8819 series is inserting in many industrial applications and in various fields. The following table contains some examples.

Applications

- | | |
|---------------------------|---------------------------|
| - Submersible pumps | - Car washing equipment |
| - water treatment plants | - Machine tools |
| - Off-shore applications | - Industrial applications |
| - Rail and road lightning | - e.g. agriculture |

In the past, this series 8819 was built by company "Souriau Connector Technology". Since 2003, we - **JOWO – Systemtechnik GmbH** - are responsible for production, manufacturing and distributing this connectors worldwide. Our modern commodities management system guarantees shortest delivery times.

Series 8819



Technical data

Description	Shellsize	
Number of contacts	4	7
Gauge	8	12
Max. current (connector)	4 x 32A	7 x 13A
Max. current (contact)	43A	23A
Conductor size	6 ²	4 ²
Working voltage	750 V~	750 V~
Test voltage	2500~ eff.	2500~ eff.
Service pressure (mated connectors)	30 bar	30 bar
Service pressure (unmated connectors)	30 bar	30 bar
Temperature	- 40°C – 125°C in air - 4°C: Minimum mating/unmating temperature	
Air gap-leakage path	6 mm	4 mm
Protection class	IP 68	IP 68
Rated current	-	16A
Intensity	-	380/400V~
Rated voltage (VDE 0110 class B)	500 V~ 600 V-	380/400 V~ 450 V -
Interchangeability	According to MIL-C-5015, Shellsize 24	
Mating/unmating operations	> 10.000 cycles	

Certifications

„Federal Inspectorate For Heavy Current
Installations (ESTI), Suisse“

Germanischer Lloyd



Series 8819



References

Series	8819	- 1 -	06	- 3 -	04	- W	R -	2	2	S
Temperature and materials - 40°C – 125°C in air 1 – Temperature and materialclass										
Type of connector 00 – Receptacle male 01 – Inline receptacle male 06 – Plug, female without pilot 08 – Receptacle, female without pilot 16 – Plug, female, incl. 1 contact, pilot 18 – Receptacle, female, incl. 1 contact, pilot (Type 02, 08, 18 only available with 7 contacts)										
Shellsize 3 – Shellsize										
Contactlayout 04 – 4 Contacts 07 – 7 Contacts										
Type of contact W - Crimpcontacts										
Type of used cable F – Flat ribbon cable R – Round cable S – Open, available only for receptacle										
Cable-entry 1 – Outer diameter 9,5 - 12,00 mm 2 - Outer diameter 11,5 - 14,50 mm 3 - Outer diameter 14,0 - 17,50 mm 4 - Outer diameter 16,0 - 20,25 mm										
Type of fixation 1 – Oetiker - clamp 2 – Ligarex - band										
Certificates S – SEV-Certificate; necessary only for applications in Suisse (SEV - Certificate) GL – Certificate „Germanischer Lloyd“										

Series 8819

Plug
female, 4 contacts



Part number	Cable Ø
8819-1-06-3-04-WR12S	9,5 -12,00
8819-1-06-3-04-WR22S	11,5 -14,50
8819-1-06-3-04-WR32S	14,0 -17,25
8819-1-06-3-04-WR42S	16,0 -20,25

If a pilotcontact is necessary, please replace
-06- to -16- (see references for details)

Inline receptacle
male, 4 contacts



Part number	Cable Ø
8819-1-01-3-04-WR12S	9,5 -12,00
8819-1-01-3-04-WR22S	11,5 -14,50
8819-1-01-3-04-WR32S	14,0 -17,25
8819-1-01-3-04-WR42S	16,0 -20,25

Receptacle
male, 4 contacts



Part number
8819-2-00-3-04-WS

**Protection cap for receptacle /
inline receptacle**



Part number
8819-211

Protection cap for plug



Part number
8819-229A

Series 8819

Plug
female, 7 contacts



Part number	Cable Ø
8819-1-06-3-07-WR12S	9,5 -12,00
8819-1-06-3-07-WR22S	11,5 -14,50
8819-1-06-3-07-WR32S	14,0 -17,25
8819-1-06-3-07-WR42S	16,0 -20,25

Inline receptacle
male, 7 contacts



Part number	Cable Ø
8819-1-01-3-07-WR12S	9,5 -12,00
8819-1-01-3-07-WR22S	11,5 -14,50
8819-1-01-3-07-WR32S	14,0 -17,25
8819-1-01-3-07-WR42S	16,0 -20,25

Receptacle
male, 7 contacts



Part number
8819-2-00-3-07-WS

Plug
male, 7 contacts



Part number	Cable Ø
8819-1-02-3-07-WR12S	9,5 -12,00
8819-1-02-3-07-WR22S	11,5 -14,50
8819-1-02-3-07-WR32S	14,0 -17,25
8819-1-02-3-07-WR42S	16,0 -20,25

Receptacle
female, 7 contacts

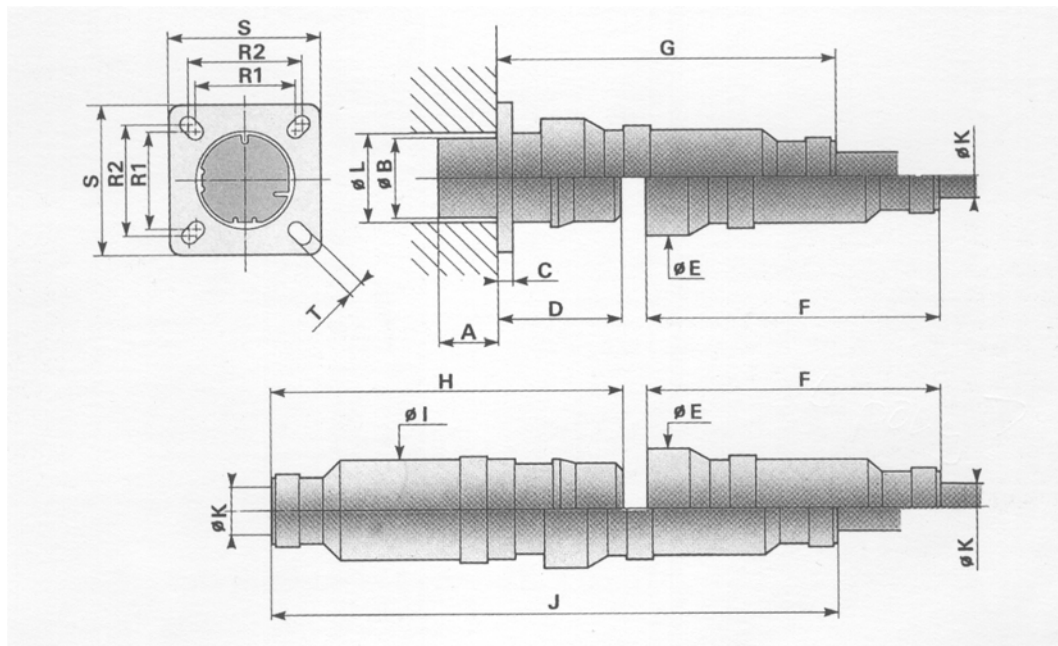


Part number
8819-2-08-3-07-WS
8819-2-18-3-07-WS (incl. pilotcontact)

Series 8819

Dimensions

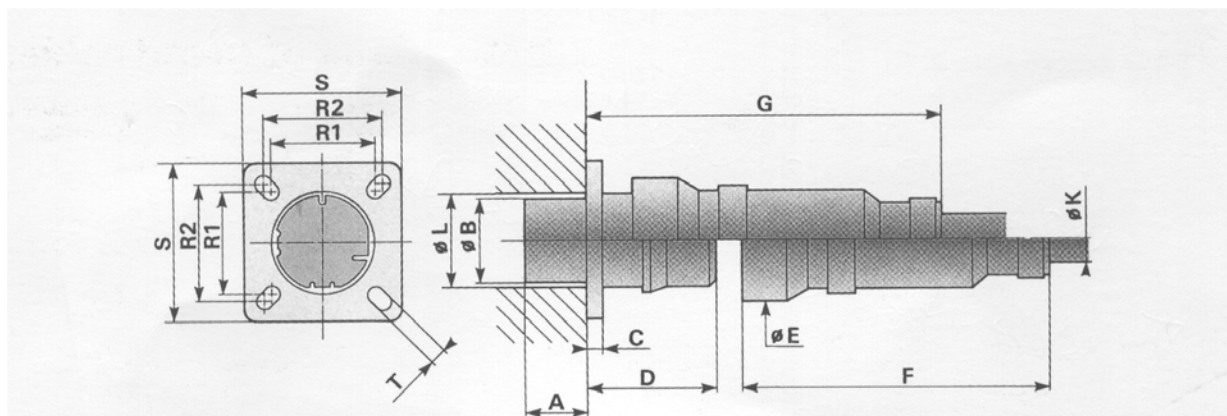
Plug, female and receptacle / inline receptacle, male with layouts 04 / 07



A	B	C	Dmax	E	F	G	H	I	J	K	L	R1	R2	S	T
25	26,5	5,5	41,4	38	117	131	122	34	212	20,2	26,6	34,8	38	45,2	4,5

All sizes in mm

Plug, male and receptacle female with layout 07



A	B	C	Dmax	E	F	G	K	L	R1	R2	S	T
25	26,5	5,5	41,4	38	117	131	19	26,6	34,8	38	45,2	4,5

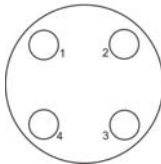
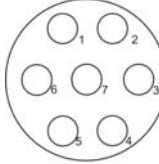
All sizes in mm

Series 8819

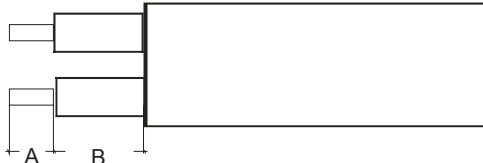


Dimensions

Contactlayouts

Shellsize JOWO 8819	Shellsize MIL-C 5015	Contactlayouts (as seen from crimping side)	
3	24	Insulator 4 contacts	Insulator 7 contacts
		 4 # 8	 7 # 12

Wiring gauges

	A = 7 mm	A = 6 mm
	B = 20 mm	B = 25 mm

All connectors will be delivered with reducing sleeves. It is necessary to insert them for using cables with single-wiring 1,5 up to 4mm². All other wiring dimensions up to 6mm² can be implemented directly without the sleeve.

You can find detailed instructions for mounting the connector in every package.

If you need technical support, do not hesitate to contact us

Disclaimer

This catalogue has been prepared with greatest care. Our products are always subject to a programme of improvement and testing. We reserve the right to change or to amend materials and specification without notice.

All dimensional data, materials or specifications should be confirmed by the company prior incorporation in design or purchase specifications. **JOWO - Systemtechnik GmbH** does not accept liability for loss or damage, consequential or otherwise resulting from any inaccuracies omissions or typographical errors in this document.



**JOWO-Systemtechnik GmbH
Lange Wand 12
27753 Delmenhorst**

Tel.: +49 (0) 4221 – 915715

Fax: +49 (0) 4221 – 915717

E-Mail: info@jowosy.de

Internet: www.jowosy.de